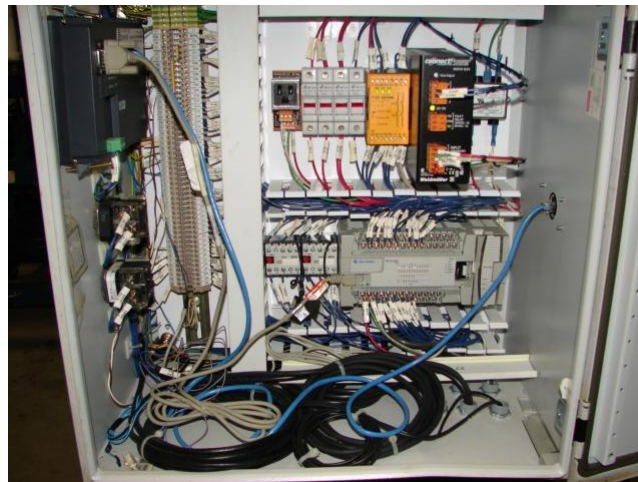


Hypercycl Aries Engineering Press



HYPERCYL ARIES ENGINEERING 20 ton Press, #HPS-20-6-.50-FH-LT, satellite cylinder and booster, 6" total stroke, .50" power stroke, flange mount, low voltage linear transducer, hydraulic hose assembly (1'-10') with dry-break style disconnect, output force @ 65 PSI: 25,210 lbs., prefilled and tested

- **Brand:** Hypercycl Aries Engineering
- **Capacity:** 20 tons