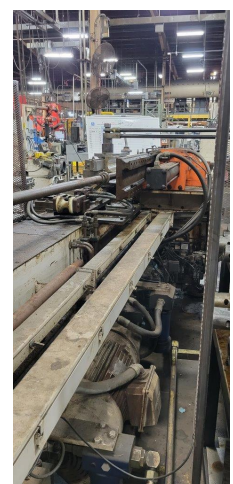


6" Pines #4 Tube Bender



Pines horizontal heavy duty mandrel type tube bending machine
Model: #4
Specifications:

- **Stock Number:** AM20915
- **Brand:** Pines
- **Capacity:** 6 inches

- Maximum bending capacity:
- Round Non-Ferrous: 6" OD x .250" wall
- Round Mild steel: 6" OD x .165" wall
- Round Stainless steel: 4-1/2" OD x .250" wall
- Round Black iron pipe: 4" schedule 80
- Square Mild steel: 4" x .250" wall
- Maximum degree of bend: 180° + springback
- Maximum centerline radius: 18" (approx.)
- Maximum tube length over mandrel: 145" (approx.)
- Bending rotation: Left hand (counter-clockwise)

Includes:

- Touchscreen programmable control
- Allen Bradley electrics
- Wiper die holder
- Hydraulic pressure die assist
- Hydraulic mandrel extractor
- Direct acting CD and PD
- Air powered hydraulic oil heat exchanger