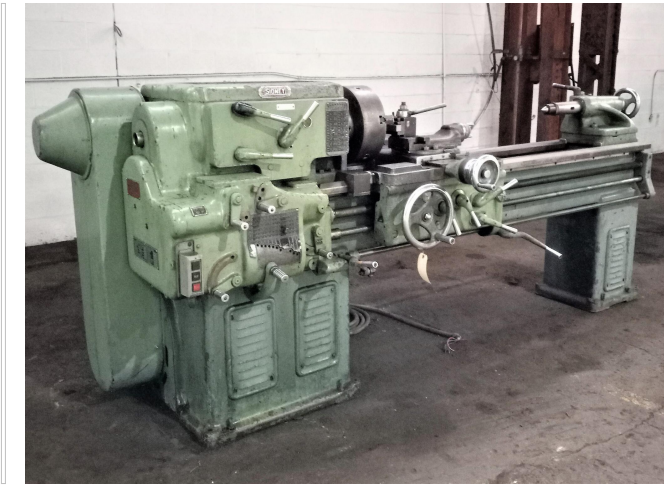


Sidney Lathe - #14"



Sidney 14" Lathe

- Machine Size: 14"

Specifications (per mfg. literature):
Range:

- Swing over bed: 16-1/2"
- Swing over carriage: 10-3/4"
- Swing over compound rest bottom side: 9-3/4"
- Takes between centers: 6' bed 30"

Headstock:

- # of Spindle speeds: 12
- Standard spindle speed range: 14 - 534 RPM
- Spindle nose - "L" type: No. 1

- **Stock Number:**
AM21538
- **Brand:** Other
- **Capacity:** 14 inches

- Spindle nose - threaded: 3-1/2"
- Spindle nose - cam-lock: 6"
- Spindle nose - flange type A or B: 6"
- Hole through spindle: 1-9/16"
- Taper of center - morse: No. 4

Tailstock:

- Spindle diameter: 2-5/8"
- Spindle travel: 7"
- Base length on bed: 12"
- Maximum overhang: 3"

Gearbox:

- # of Thread and feed changes: 48"
- Thread per inch range: 1-1/2 - 92"
- Feed per revolution range: .0027 - .172
- Lead screw Diameter: 1-7/16"
- Lead screw threads per inch: 4 acme

Carriage:

- Length of bed: 25-1/2"
- Bridge width: 7-3/4"
- Compound rest top slide travel: 4-1/4"
- Size of lathe tool: 5/8" x 1-1/4"

Bed:

- Width: 15-1/2"
- Depth: 12-1/4"
- Collet:
- Maximum capacity (draw bar): 1-1/8"

Shaft

- Rotation: counter-clockwise
- Speed: 810