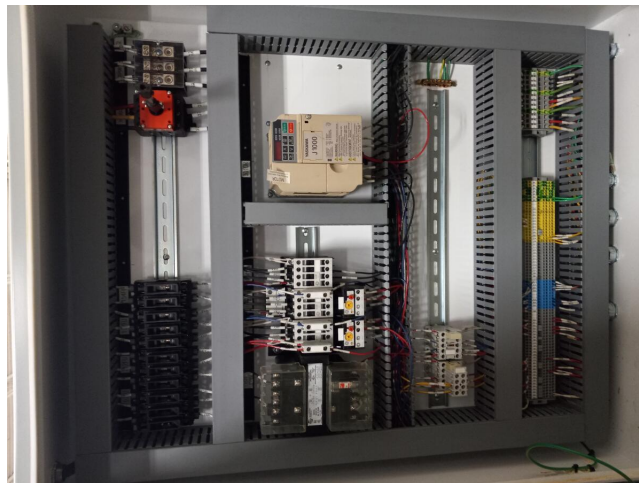


2.5" Burrmaster #BM05 Tube End Deburring Machine



Burrmaster Double End Deburring Machine

- Model: BM05

Specifications:

- Maximum tube length: 120" (approx.)
- Minimum tube length: 3.75" (approx.)
- Maximum tube diameter: 1.75" OD
- Minimum tube diameter: 0.125" OD
- Brush diameter: 12" OD
- Brush length: 12"

Includes:

- **Stock Number:** AM22019
- **Brand:** Other
- **Capacity:** 2.5000 inches

- Machine mounted operator controls